


www.ifrc.org  
Saving lives,  
changing minds.

# Emergency Appeal

## Zambia: Drought (Food Insecurity)

 International Federation  
of Red Cross and Red Crescent Societies

Appeal n° MDRZM012

57,064 people (9,510 households) to be assisted

Appeal launched October 2019

Glide n° OT-2019-000132-ZMB

250,000 Swiss francs DREF allocated

Appeal ends April 2021

3,5 million Swiss francs funding requirements

This Emergency Appeal seeks a total of some **3,5 million** Swiss francs to enable the International Federation of Red Cross and Red Crescent Societies (IFRC) to support the **Zambia Red Cross Society (ZRCS)** to deliver assistance and support recovery of **57,064 people (9,510 households)** for **18 months** with a focus on the following areas: **Livelihoods and Basic Needs, Health, Water Sanitation and Hygiene (WASH), Protection Gender and Inclusion (PGI), Community Engagement and Accountability (CEA) and National Society Capacity Strengthening**. The planned response reflects the current situation and information available at the time of the design of the operation.

## The disaster and the Red Cross Red Crescent response to date

**May 2019:** Zambia Vulnerability Assessment Committee (ZVAC) led by Disaster Management and Mitigation Unit (DMMU) undertakes a vulnerability in five most affected provinces. The official [report](#) highlights that **1.7 million** people would be food insecure between May to September 2019 and that the number is likely to reach **2.3 million** for the period between October 2019 to March 2020. Estimated **1,840,000** people are in crises phase (IPC 3)<sup>1</sup>, while **410,000** people are in emergency phase (IPC<sup>2</sup> 4<sup>3</sup>).



*Scorched maize field in Western Zambia (2018/2019 season),  
Photo: Zambia Red Cross*

**June 2019:** ZRCS branches assist the Government through DMMU to spearhead relief food distribution to selected households in North Western, Western and Southern Provinces.

**September 2019:** IFRC issues an [Information Bulletin](#) highlighting the food insecurity situation in the country.<sup>4</sup>

**October 2019:** IFRC launches an Emergency Appeal for 3,512,000 Swiss Francs to assist 57,064 people for 18 months and allocates 250,000 Swiss Francs from the Disaster Relief Emergency Fund (DREF) to start the operation.

<sup>1</sup> Households either: - Have food consumption gaps that are reflected by high or above-usual acute malnutrition; OR- Are marginally able to meet minimum food needs but only by depleting essential livelihood assets or through crisis-coping strategies.

<sup>2</sup> Households either: - Have large food consumption gaps which are reflected in very high acute malnutrition and excess mortality; OR- Are able to mitigate large food consumption gaps but only by employing emergency livelihood strategies and asset liquidation.

<sup>3</sup> 2019 In-depth Vulnerability and Needs Assessment for Zambia:

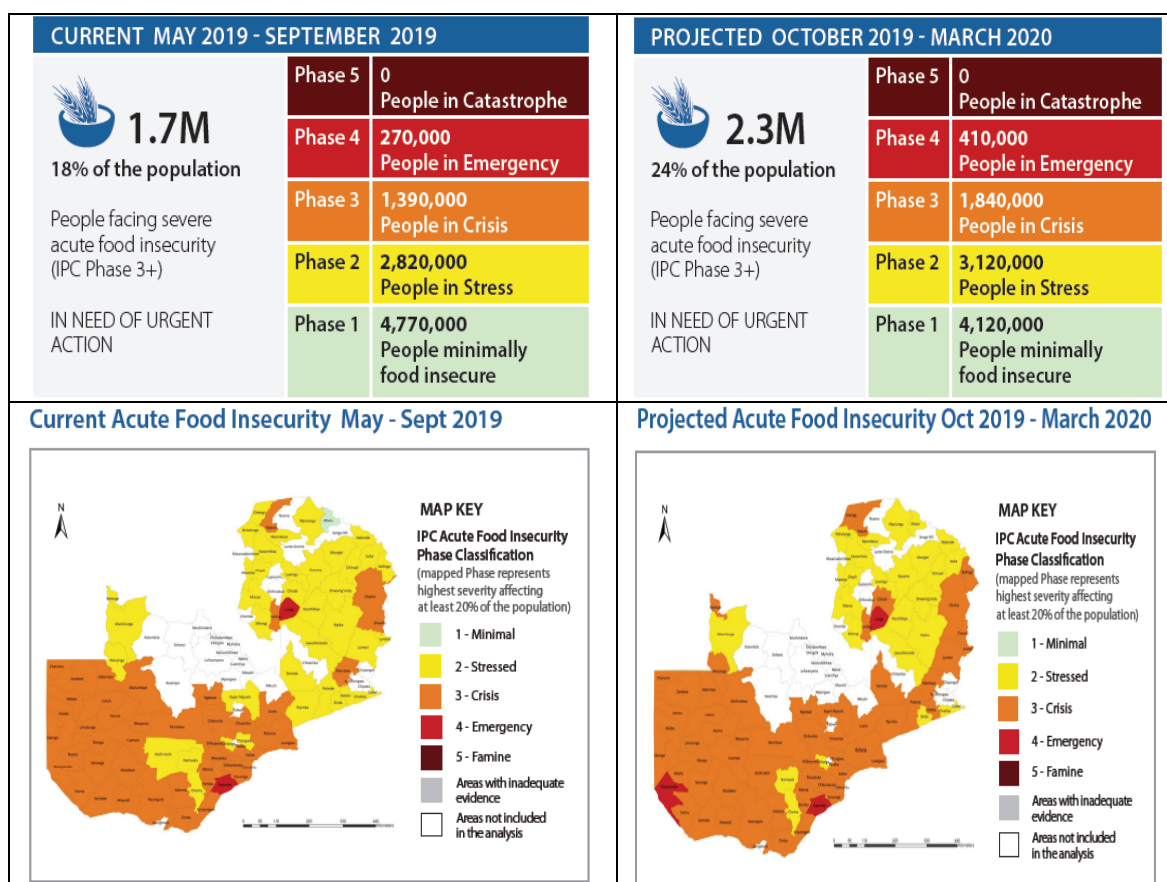
<sup>4</sup> [https://www.ifrc.org/docs/Appeals/IB%20Zambia\\_Food%20Security.pdf](https://www.ifrc.org/docs/Appeals/IB%20Zambia_Food%20Security.pdf)

## The operational strategy

### Needs analysis

The 2018/2019 rain season was characterized by low rainfall and prolonged dry spells which negatively affected the agriculture sector, particularly crop and livestock production. The government of Zambia through the ZVAC undertook an assessment of the impact of the drought situation on different sectors during the month of May 2019. The food security situation is estimated to likely deteriorate during the lean season. The official report highlights that 1.7 million people are currently food insecure and this figure is projected to increase to 2.3 million between October 2019 and the end of the current consumption period, March 2020. Of the total population, 1,840,000 people are in crises (phase 3) and 410,000 people are in emergency (phase 4). Southern, Western, North western and parts of Eastern provinces are the most severely affected. For detailed phase classification and affected population refer to the table 1 below.

Table 1: Phase Classification with affected population as per the 2019 ZVAC Report



As depicted in the IPC summary maps above, majority of households are facing starvation and are in stressful conditions, including increased malnutrition especially in under 5 children. Current coping measures in the critically affected families include eating of wild fruits and roots, exposing themselves to consuming poisonous species which may be pose health or life-threatening issues.

The late onset of the rainy season and early departure induced a shorter rainy season punctuated by dry spells that affected ground and surface water recharge thereby accelerating dry conditions upon the departure of the season particularly in the southern half of the country. Further, excessive heat that ensured heightened effective evapo-transpiration that increased dryness. As such, water levels in most water bodies have gone low and dried up creating numerous waters needs for domestic, economic and ecological functions.

Specific impacts in the critically affected communities, alongside agriculture (food insecurity), include a reduction in access to clean and safe water for drinking, production and livestock. The problem of water shortage is multifaceted and impacts on other sectors which include; WASH, livestock, health, hygiene, energy, and education.

According to UNICEF – Zambia office, micronutrient deficiencies are common among children in Zambia. Anemia has been a severe public health issue, among children between the ages of 6 - 59 months over the past two decades. The latest national micronutrient survey indicates a vitamin A deficiency prevalence of 54 per cent among children under five<sup>5</sup>.

### Current RC/RC Response

The seven (7) Branches of the National Society (NS) in Eastern, Southern, North-Western and Western provinces have been distributing relief food (mealie meal) on behalf of the government in which 70 volunteers and 5 members of staff are involved. There is no specific target group as entire communities are affected, but support is given based on the resources available. The government registers the beneficiaries, and the Red Cross helps to validate the list with community leadership before distribution.

ZRCS and the Netherlands Red Cross regularly convene liaison meetings for enhanced coordination, support and mutual appreciation of shared goals. The Netherlands Red Cross (NLRC) is supporting a program called Strengthening Response Preparedness (RP II). The aim of the project is to build the preparedness capacity of the ZRCS to be able to respond to disasters. The project adopted among others, three key innovative mechanisms which are:

- Data Preparedness;
- Forecast-based Financing (FbF); and
- Cash Based Interventions (Cash Transfer Programming)

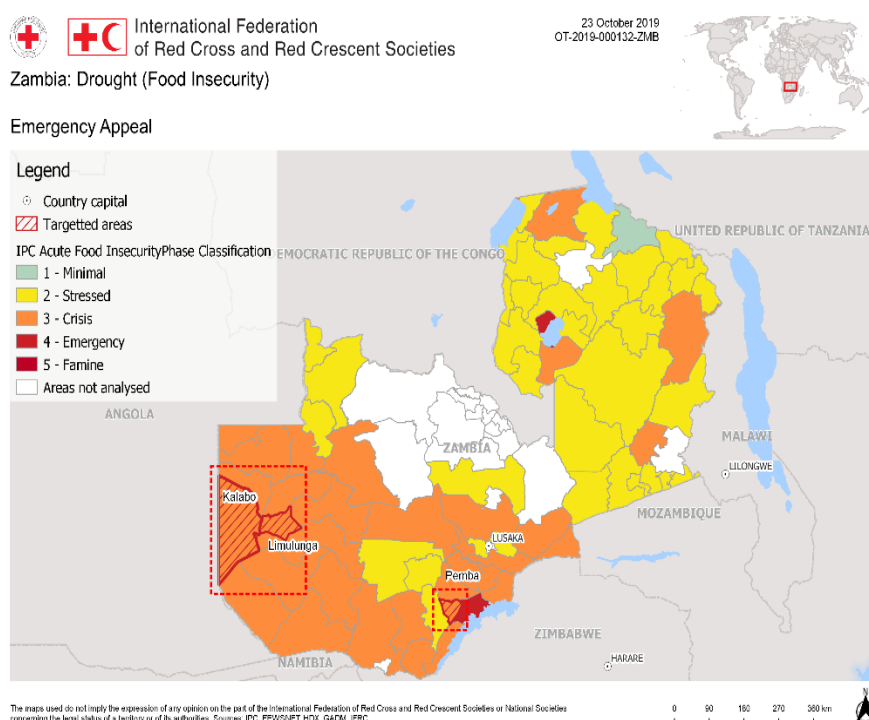
As one of project deliverables, IFRC collaborated with NLRC to carry out the Contingency Plan simulation early 2019 in Zambia. The NS has two staff members trained as trainers of trainees in community engagement and accountability (CEA) and head office staff was introduced to CEA by IFRC Nairobi office.

### Targeted Population

This Emergency Appeal will target 57,064 people (9,510 households) in Kalabo and Limulunga Districts in Western Province and Pemba district in Southern Province which are among the 28 affected districts in the two targeted provinces.

In total two out of the three districts are having the burden of 13,598 people that are classified under IPC phase 4. The decision on the specific villages to be supported will be reached through discussion with the local and traditional authorities, in addition beneficiary selection will also be informed by the rapid assessment that will be conducted.

The table below shows the number of people in the selected districts who will be targeted per district. The household size has been calculated based on 6 members per household, which is the average household size according the Central Statistical Office (CSO).



Map 1: IPC classification and targeted districts. © IFRC

<sup>5</sup> <https://www.unicef.org/zambia/>

Table 2: Selected affected Districts per Province showing affected population and targeted HHs

No	Targeted Province	Targeted Districts	IPC Phase 3 (people)	IPC Phase 4 (people)	Targeted HH
1	Southern	1. Pemba	16,212		2,702
2	Western	5. Limulunga	12,098	4,938	2,839
		6. Kalabo	15,156	8,660	3,969
Totals			<b>43,466</b>	<b>13,598</b>	<b>9,510</b>

Households will be selected through a community-based targeting approach to identify the most vulnerable for cash transfers and livelihoods related services. These will include elderly, female headed households; pregnant or lactating mothers with children under 5 years; households headed by people with disabilities with no source of income; and child-headed households.

### Coordination and partnerships

The National Society is working in close coordination with the government through Disaster Management and Mitigating Unit (DMMU), local and international NGOs and UN Agencies. A series of coordination meetings hosted by World Vision Zambia have been ongoing under the coordination mechanism dubbed the Zambia Humanitarian Response Consortium, of which ZRCS is a part, to discuss the current drought situation in the country.

**Red Cross Red Crescent Movement Coordination:** Netherlands Red Cross is the only partner NS working closely with the ZRCS and gives technical support to the NS in areas of disaster management, NS preparedness and general national society development.

Both International Committee of the Red Cross (ICRC) and Netherlands Red Cross are supporting the Response to Population Movement operation, implemented by the National Society. The ZRCS has been working closely with IFRC Southern Africa Cluster office based in Pretoria, coordinating the design of this response plan.

**Other coordination mechanisms:** World Vision is hosting and chairing coordination meetings which are aimed at bringing together various key stakeholders to address the drought situation in Southern and Western Provinces of Zambia. The coordination meetings are attended by, among others, UN Agencies (UNDP, FAO, WFP, UNICEF), local and international NGOs. Further, this initiative has government blessings through the DMMU which also provided the consortium with additional information on the situation. In addition, the government has committed to providing the Letter of Support to those that would require it.

The National Society has done a mapping of actors working in the targeted two provinces, their interventions as well as the geographical targets. In view of the various ongoing interventions, ZRCS will work with other partners at district and national level to ensure there is no duplication of efforts. ZRCS will also take part in coordination meetings at national level to ensure all responses are coordinated.

## Proposed Areas for intervention

**Overall Operational objective** is to provide support for basic needs including food (through cash-based interventions (CBI); Health, WASH; restore and strengthen livelihoods for 9,510 household in the Southern and Western provinces for a period of 18 months.

### Livelihoods and Basic Needs

**Outcome: Communities, especially in disaster and crisis affected areas, restore and strengthen their livelihoods**

**Output 1.5: Households are provided with unconditional/multipurpose cash grants to address their basic needs**

This output will focus on the provision of immediate basic needs support through cash-grants to 9,510 HH in the Kalabo, Limulunga and Pemba districts for 6 months. Unconditional/multipurpose cash grants of K400 will be disbursed on monthly basis for a period of 6 months. This transfer value has been benchmarked from other partners implementing cash in the country, the country has no national working group. For instance, World Renew who are currently responding in some districts of Western Province are using a transfer value of K391 and K490 per household per month. The minimum expenditure basket was established including the average cost of key commodities that constitute the food basket as well as transport. Since this is a multipurpose assistance thus the grant received can be utilized by the recipients based on their household needs and priorities.

In total 9 staff have been trained in cash transfer with the support of IFRC and the Netherlands Red Cross, in October 2018. Further CBI training will be provided to the 90 volunteers and staff.

There are established financial service providers (Airtel, MTN, Zoon) in Zambia and ZRCS has engaged and identified three and draft contracts have been shared for evaluation.

ZRCS has not carried out a market assessment although other partners such as Save the children have carried out the market assessments within the same targeted provinces. While completing its Feasibility study for CBI, ZRCS will be relying on the assessments carried out by other actors which highlights that the markets are functioning, to kick-start its interventions. The post-distribution monitoring will equally help to assess how cash was utilized and will allow for a review of this strategy if necessary, in the subsequent responses.

**Output 1.2: Household livelihoods security is enhanced through food production increased productivity and post-harvest management (agriculture-based livelihoods)**

***This output will focus on provision of agricultural inputs (seeds, tools and equipment) for crop production, and support the establishment of fish farms.*** The support on input provision and technical services will be undertaken through; (a) vouchers/direct distribution to 4000 households, and (b) 15 demonstration farms (5 per district) to provide centres for training, learning and promotion of climate sensitive agricultural techniques to increase food production. Feasibility studies will be carried out to inform the specific design of the two proposed interventions.

**Agricultural Input support:** ZRCS will employ a two-pronged approach in the provision of inputs and technical services, that is, input provision through vouchers and direct distribution to 4,000 households, and group approaches targeting 15 Community groups through demonstration gardens.

- i. ZRCS will target 4,000 households with agricultural inputs (seeds and tools) accompanied by technical support through training, extension services and promotion of Climate - smart agriculture approaches.
- ii. In addition, ZRCS will target 15 community groups through demonstration farms to promote avenues for training, peer to peer learning, promotion of climate smart agricultural approaches such as conservation farming, rainwater harvesting/flood diversion to support vegetable gardening etc. The targeted community groups will be supported with training, ongoing technical services, seed, tools, water pumps, spraying pumps and fencing materials. Working closely with the Ministry of Agriculture, ZRCS will setup 15 demonstration gardens (1 at district level and four at community level in each of the districts).

The proposed agricultural input support programme such as seed distribution, among others, to small scale farming households is meant to bridge the capacity gaps worsened by the combined and successive impacts of firstly floods in the 2017/2018 season and drought in the 2018/2019 season that induced widespread food insecurity for which communities developed varying unsustainable coping mechanisms, including consuming the seed reserved for the next farming season thereby undermining the anticipated desirable path to recovery even if the country was to have good rainfall performance.

ZRCS will work closely with the Ministry of Agriculture on the input supply mechanisms that will include input voucher through certified agro-dealers in the district and direct procurement and distribution by ZRCS in remote



areas not covered by the agro-dealers. ZRCS will ensure the procured seed is drought resistant, can allow for seed multiplication, and fits the community production and consumption preferences. Staff and volunteers will be trained in climate smart agricultural technics and follow up technical support will be given in collaboration with the Ministry of Agriculture. Community sensitization campaigns on sustainable agriculture will be undertaken to promote adaptation options.

**Support of Fish farming:** To promote livelihood diversification among the affected communities, ZRCS will pilot fish farming a concept that is being promoted by the Zambian government with reported successes around the country. In the Western province fishing is the major economic activity, alongside livestock and crop farming, whilst in the Southern Province livestock and crop farming are predominant. Recurrent drought events have reduced livelihood options for the most affected households and exerted pressure on reduced natural fishing options, a scenario that forced government to instituting deliberate measures to support fish farming/aquaculture development. The proposed intervention therefore aims to support affected communities develop alternative livelihood options in the face of a changing climate that has eroded normal livelihood options. In addition, government fisheries extension officers are present in all the districts countrywide to provide technical support to individuals and groups venturing into fish farming.

ZRCS proposes to set up one farm per district. Community committees will be set up, a process to be supported by ZRCS, to manage the farms. These committees as well as the project staff and volunteers will be capacitated and trained using guidelines already developed by the Ministry of Fisheries and Livestock

ZRCS will also facilitate peer to peer support to promote knowledge exchange between the already established farms and the project groups. Communities will be supported to market fish and get supplier contracts with local restaurants and other established vendors. Special efforts will be made to explore potential funding opportunities to support roll out of the livelihood initiatives introduced by this Emergency appeal. These include approaching Red Cross Red Crescent (RCRC) Movement and non-movement partners and donors to solicit financial resources to scale up the fish farming initiatives in the target districts.

## Health

**Outcome: The immediate risks to the health of affected populations are reduced**

***Output: Moderate and Severe Acute Malnutrition is addressed in the target population***

Through health statistics there have been reports of increased cases of malnutrition for children between 6 to 59 months. To respond to the increased malnutrition statistics, ZRCS is proposing to procure and distribute nutritional food supplements to complement dietary deficits for identified cases. Distribution will be done through health facilities in collaboration with health workers, following existing guidelines established by UNICEF. This intervention will target 900 children in the three districts for a period of six months.

To strengthen the nutritional support, ZRCS will provide nutritional education targeting mothers and pregnant and lactating women. ZRCS 90 volunteers will be trained in nutritional screening (MUAC) to identify malnourished cases of children and refer them to local clinics. ZRCS has an established referral system with the Ministry of Health. Other prevalent health issues will be mainstreamed in the health education sessions by the ZRCS volunteers. ZRCS has an existing relationship with UNICEF and will seek to collaborate in areas of volunteer training in nutrition.

## Water and Sanitation:

**Outcome 1: Immediate reduction in risk of waterborne and water related diseases in the targeted communities**

This specific output will focus on the rehabilitation of water facilities in the 3 districts that will be engaged in agricultural activities for increased food production. According to reports from World Renew (an NGO working in the targeted provinces), between 10% to 80% of the water points have dried up in the affected areas, due to the water table that has dropped. To support the small-scale irrigation initiatives, ZRCS will provide one borehole in areas where demonstration groups will be

established, and the water will also support domestic use and livestock. ZRCS will work with the department of water to explore existing water sources that can be repaired before considering drilling of new boreholes. The target areas have adequate ground water resources to support this intervention. Borehole siting will be done before drilling, to be sure of the yielding capacity of the borehole. The Southern Province district (Pemba) has a perennial stream (flowing all year round) which implies the water table is closer to the surface. Proposed wash interventions will also include training of volunteers and community awareness sessions on hygiene promotion by the volunteers.

***Output 1: Hygiene promotion activities which meet SPHERE standards in terms of the identification and use of hygiene items provided to target population***

**Hygiene Promotion by the volunteers:** In total 90 volunteers will be trained in hygiene promotion and sanitation. ZRCS will work together with the Ministry of Health at district level to co-facilitate the training of the volunteers. This will be followed by the awareness creation on hygiene and sanitation in the target communities through house-to-house and community meetings.

**Outcome 2: Improved access to safe water by communities**

***Output 1: Community managed water sources giving access to safe water is provided to target population***

This output will focus on the rehabilitation of water facilities to be preceded by assessment of the water point facilities.

**Rehabilitation of water points:** ZRC will carry out rapid assessment on the current situation of the water facilities in the targeted communities to determine their status and inform the process of rehabilitation/drilling.

The ZRCS headquarter, in close collaboration with government, will work closely with the branches and volunteers, ensuring they understand the scope of the project and that they have relevant capacities to deliver the planned interventions. Training of the staff and volunteers will be conducted to strengthen their capacity. Water management will also be selected and provided with relevant trainings. ZRCS will also carry out continuous situation and needs assessments including markets in the affected areas to establish better functionality and access to markets.

Community Engagement and Accountability (CEA) will be integrated at the start of and throughout the response process to ensure active and meaningful participation of the affected communities in decisions about support required. ZRCS's 90 volunteers will be provided with a one-day orientation on CEA at the start of the project. The ZRCS interventions, therefore, will be guided by the expectations, needs and concerns of affected communities.

Since the food insecurity is a recurring problem in southern Africa, the ongoing food security assessment led by IFRC and Nairobi office will inform the long-term programming to build the resilience of targeted communities beyond the timeframe of this operation.

## Areas of Focus



### Livelihood and Basic Needs

**People targeted: 57,064**

Male: 27,390

Female: 29,674

**Requirements (CHF): 2,585,000**

#### Proposed Intervention

**Needs Analysis:** Zambia is highly susceptible to weather-related hazards, particularly floods and droughts. The 2018/2019 season was characterised generally by below normal rainfall punctuated by prolonged dry spells. This induced water scarcity and soil moisture loss that affected the agriculture sector, among many others. The current situation generated several impacts covering food insecurity including child malnutrition, water scarcity and diseases. A feasibility study for cash intervention will be carried out to inform transfer modalities, appropriate targeting and monitoring of intended use.

**Population to be assisted:** The ZRCS proposes to support a total of 57,064 individuals (9,510 HHs) in three districts of Kalabo (23,756) and Limulunga (17,036) in Western Province and Pemba (16,212) in Southern Province respectively. This accounts for 67.6% of the population in IPC 3 and above (84,353) for the three target districts.

The programme will apply geographical targeting approach based on the coverage of other agencies updates on the drought and food security situation. These will be identified through engagements at national and district coordination platforms. At the village level, community-based targeting approach will be used to identify the specific households that will be registered. Communities will be mobilized through all existing local structures like schools, churches and the offices of the traditional authorities.

Whereas basic needs assistance (including cash to procure food) is aimed at addressing the immediate needs due to the ongoing acute food insecurity situation, the livelihood in crop production and fish farming is designed to initiate recovery and long-term community resilience to withstand recurrent drought events and climate impacts that undermine livelihoods.

**Outcome: Communities, especially in disaster and crisis affected areas, restore and strengthen their livelihoods**

**Output 1.2: Basic needs assistance for livelihoods security including food is provided to the most affected communities**

- **Cash support for food and other basic needs**

#### Planned Activities:

- Conduct inception meetings with local stakeholders
- Feasibility study for Cash and Voucher Assistance (CVA)
- Procurement of Financial Services Providers for the implementation of CVA and execution of Pre-Disaster Agreements/contracts with Financial Service Providers
- Identification and registration of targeting population
- Disbursement of Cash transfer to 9,510 project targeted population
- Field monitoring of response implementation
- Carry out post-distribution monitoring including market/price monitoring
- Continuous market assessment in coordination with other organizations
- Training of volunteers in Cash and Vouchers Assistance
- Carry out Lesson learned workshop to incorporate learnings into Cash Preparedness of ZRCS

**Output 2: Household livelihoods security is enhanced through food production increased productivity and post-harvest management (agriculture-based livelihoods)**

#### Planned Activities

- Inter-agency collaboration / coordination meetings
- Procurement of farming inputs and implements for 4000 households after the start of next cropping season



- Establishment of 15 demonstration farms (5 per district)
- Distribution of farming inputs and implements to target areas (through vouchers and direct distribution).
- Fish farming development initiatives in three selected affected communities
- Peer to peer support for learning exchange for fish farming
- Training of volunteers and communities in fish farming techniques, irrigation systems and winter cropping
- Community sensitization campaigns on local sustainable livelihoods in three districts.
- Rehabilitation / construction of boreholes to support small scale farming activities, domestic and for livestock use.



## Health

**People targeted: 900 children**

Male:432

Female:468

**Requirements (CHF): 329,000**

### Proposed intervention

**Needs Analysis:** Due to the current food situation there has been reports of increased cases of malnutrition among the children under 5 children. To respond to the increased malnutrition statistics, ZRCS is proposing to procure and distribute nutritional food supplements to complement dietary deficits for identified cases.

**Population to be assisted:** 900 children (300 per district) will be directly supported by the nutritional supplements, the general population in the targeted communities will benefit from nutritional screenings and health education.

**Outcome: The immediate risks to the health of affected populations are reduced**

**Output: Moderate and Severe Acute Malnutrition is addressed in the target population**

#### Planned Activities:

- Conduct child malnutrition screening / assessment by the volunteers and refer all cases of acute malnutrition to health facilities for appropriate management
- Distribution of Ready for Use Food supplements (plumpy nuts) by the health facilities
- Training 90 volunteers in child malnutrition nutrition screening.
- Procure recommended commodity for supplementary feeding (Children < 5 years malnourished) as per UNICEF recommendations
- Awareness raising on nutrition and other health matters by the volunteers.



## Water, sanitation and hygiene

**People targeted: 1,170 people (195 families)**

Male:562

Female:608

**Requirements (CHF): 121,000**

### Proposed intervention

**Needs Analysis:** Consecutive dry spells have resulted in limited access to clean drinking water for people and animals as boreholes dry out and groundwater levels retreat. Water scarcity limits the livelihood opportunities of communities such as engaging in gardening. The little water available is normally shared with animals.

Proposed wash interventions will include rehabilitation and improvement of community water supply systems and hygiene promotion by the volunteers.

**Population to be assisted:** Rehabilitation or drilling of water facilities will target 15 community/demonstration groups. The water supply will also benefit families within the vicinity of facilities for domestic as well as livestock use.

**Outcome 1: Immediate reduction in risk of waterborne and water related diseases in the targeted communities**

**Output 1.1: Hygiene promotion activities which meet SPHERE standards in terms of the identification and use of hygiene items provided to target population**

**Activities Planned**

- Train 90 volunteers on hygiene promotion and sanitation
- Sensitize community on hygiene & sanitation promotion matters.

**Outcome 2: Improved access to safe water by communities**

**Output 2.1: Community managed water sources giving access to safe water is provided to target population**

**Activities Planned**

- Assessment of the water facilities in targeted communities
- Rehabilitate water points in 3 districts that will benefit the communities engaging in agricultural interventions.
- Train water committees in management of water supplies and operation and maintenance of infrastructure



## Protection, Gender and Inclusion

**People targeted: 57,064**

Male:27,390

Female:29,674

**Requirements (CHF): 20,000**

### Proposed intervention

**Needs analysis:** Based on varying reasons such as cultural and religious, some people are left out and miss humanitarian assistance because they are either ignored or discriminated upon based on their gender, age or disability, yet they feel the worst effect of any crisis. This operation will design the targeting criteria based on vulnerabilities leveraging on diversity factors among others like age and gender. The intervention will seek to engage the at-risk groups such as the elderly and people living with disabilities so that they gain equitable access to the assistance. Inclusion will also be considered when deciding on distribution points or strategies used in community engagement to ensure accountability. An assessment will be undertaken three months into implementation to ascertain the impact of community engagement and accountability (CEA) on increasing consideration of gender and inclusion criteria in the emergency response.

**Outcome 1: Communities identify the needs of the most vulnerable and particularly disadvantaged and marginalised groups, as a result of inequality, discrimination and other non-respect of their human rights and address their distinct needs Inclusion and Protection**

**Output 1.1: NS programmes improve equitable access to basic services, considering different needs based on gender and other diversity factors.**

**Planned Activities:**

- Assessment and analysis of vulnerabilities, capacities and protection risks based on gender, age and disability.
- Training project teams in protection, gender and inclusion issues.
- Awareness raising on different agencies offering protection services.
- Awareness-raising to prevent violence and negative coping strategies.

## Strategies for Implementation

### SFI 1 Strengthening National Society

Requirements (CHF) 331,000

Zambia Red Cross will ensure that all personnel including volunteers implementing the emergency appeal receive recognition, insurance and adequate security and duty of care. All volunteers participating in this operation will receive the proper trainings and will participate in the lessons learned workshop.

To ensure effective and efficient implementation of the operation, the following support functions and operation support will be put in place: human resources, logistics; information technology support (IT); communications; CEA; security; and planning, monitoring, evaluation, and reporting (PMER).

**Human Resources:** ZRCS has active branches in the three districts which are covered by this operation. The district branches will be supported by the Provincial Executive Committee (PEC) and the national headquarters, in accordance with their varying capacities. The costs for personnel (staff and volunteers) have been included in the operation budget, covering travel, accommodation and per-diem.

**Logistics support:** ZRCS has a procurement policy that guides in procurements and provides necessary waivers to expedite procurements in disaster response situations. IFRC will provide technical logistics capacity to ZRCS with focus on supply chain and procurement and this will include backstop visit missions. It will assess the procurement guidelines of ZRCS to be used in this operation mostly for in country procurements. To facilitate smooth and effective operations, three 4x4 motor vehicles and three motor bikes will be required. For CVA, there are established financial service providers (Airtel, MTN, Zoono) in Zambia. The ZRCS has engaged and identified three service providers, mainly mobile money, to carry out cash transfer to the selected households. The procurement process is on-going, and the draft contracts have been shared with IFRC for evaluation. The procurement of Financial Service Providers (FSPs) will be carried out considering the outreach, liquidity, services fee and flexibility to support the CVA of ZRCS.

**IT:** ZRCS has reliable internet service, data collection and analysis equipment such as desktop and laptops computers, mobile data collection tablets. Communication officer will support staff and volunteers with IT needs in the disaster response operations. ZRCS will require four HD cameras, (three for districts and one for head office) three laptops and three tablets to support the visibility and data management functions for the operation.

**Security Management:** To reduce the risk of staff and volunteers' personnel falling victim to security and safety issues, active risk mitigation measures will be adopted. This will include situation monitoring and the implementation of minimum security and safety standards. All RCRC personnel actively involved in the operation will be encouraged to complete respective IFRC security e-learning courses (i.e. Stay Safe Personal Security, Security Management, or Volunteer Security).

**Communication:** ZRCS, in collaboration with the RCRC partners aims to coordinate various awareness and publicity activities, to sensitize the public, media and donors on the humanitarian response situation on the ground. ZRCS Communication Officer will jointly follow a communication strategy to disseminate activities related to the drought response operation. Key components of communication strategy include:

- ZRCS will take high-resolution photographs, video and interview people in order to produce reports, social media posts and other material about the humanitarian situation, the implemented activities and remaining needs in the targeted localities; these results will be shared with the press, donors and partners, and uploaded to the National Society's website.
- ZRCS will distribute bulletins to national authorities, strategic partners and communities to show the progress and results achieved during the response.
- All communications products will preserve the dignity of the people and promote diversity, gender inclusion and respect for people.
- The ZRCS will establish the necessary mechanisms for communities to have a direct communication channel.

**Community Engagement and Accountability:** Community engagement in the response will be ensured through timely sharing clear information about response activities, selection criteria and distribution processes with communities through community meetings and door-to-door activities. Communities will be given opportunities to participate in the response through community meetings and ongoing surveys and assessments. Feedback and complaints will be collected through community volunteers, community meetings, focus group discussions and suggestion boxes and responses provided through community meetings. Through project inception meetings and community engagements, the communities will also be sensitized on the use of cash grants received. The IFRC's feedback starter kit with feedback database will be used to record and analyse all feedback received. This feedback will be used to guide and improve the response. To ensure this happens, CEA training will be provided to the 90 volunteers including training on good communication skills and complaints handling. A beneficiary satisfaction survey will be conducted at the end of the operation. To improve cross-learning and implementation of CEA in the response, a peer visit will be conducted by the CEA Focal Point from Malawi, as the country is experiencing similar challenges.

**Planning, Monitoring, Evaluation and reporting (PMER):** The PMER team will ensure compliance with expected deliverables and reporting requirements. In addition to the project team in the field, the PMER unit will conduct regular missions to guide the field on monitoring systems and activities and supporting community satisfaction surveys and baseline surveys to inform future monitoring and changes to the operational plan. The regular post-distribution monitoring for cash assistance will equally help to assess how cash was utilized and will allow for a review of this strategy if necessary, during the response operation as well as in the subsequent responses. The PMER will facilitate any further reviews, lesson learning, Real Time Evaluations and final operational evaluations as required, to capture the performance, including the successes and challenges of the operation to inform future operational strategies. The PMER will contribute to maintain project memories by supporting data collection, analysis, storage and dissemination in collaboration with the operation manager. PMER will create a data management system to support data collection, analysis and reporting of project indicators.

**National Society Capacity development:** Branch organisational capacity assessment (BOCA) will be carried out to develop ZRCS branches to enable branches identify and assess their strengths, limitations and challenges in relation to the wide range of organizational capacities.

**Preparedness for Effective Response (PER):** ZRCS had been involved in preparedness work through the Netherlands Red Cross (NLRC) is supporting a program called Strengthening Response Preparedness (RP II) and Contingency Planning with support of the Federation. In this regard, this EA will support the **National Disaster Response Team training** for 25 staff and volunteers of Zambia Red Cross. Safer Access Framework (SAF) will be included in the training to help the volunteers understand principles of safer access (access, perception, acceptance and security).

## **SFI4 Ensure a strong IFRC**

Requirements (CHF): 138,000

IFRC will recruit an operations coordinator, experienced in cash and voucher assistance and operations management, to support ZRCS for six months, to set up the operation. The IFRC Programme Officer, who is part of Cluster staffing, will then continue follow up the implementation of the operation with the NS till the end.

The IFRC southern Africa office will continue working closely with the Netherlands RC in areas of cash programming to strengthen the capacity of the National Society. IFRC support services such as logistics, finance and administration, planning, monitoring, evaluation and reporting (PMER) will support the operation for effective implementation.

IFRC in close collaboration with the NS will coordinate the support of the partners to towards the Emergency Appeal, ensure partners are regularly updated through teleconferences and Operations Updates.

International Federation of Red Cross and Red Crescent Societies

## EMERGENCY APPEAL

### APPEAL CODE - ZAMBIA- DROUGHT

#### *Funding requirements – summary*

---

Area of Intervention	Needs in CHF
LIVELIHOODS AND BASIC NEEDS	2,585,000
HEALTH	329,000
WATER, SANITATION AND HYGIENE	121,000
PROTECTION, GENDER AND INCLUSION	20,000
STRENGTHEN NATIONAL SOCIETIES	331,000
ENSURE A STRONG IFRC	138,000
<b>TOTAL FUNDING REQUIREMENTS</b>	<b>3,524,000</b>

Elhadj As Sy  
Secretary General

---

## Contact information

Reference documents

**For further information, specifically related to this operation please contact:  
For Zambia Red Cross Society**

Click here for:

- Previous Appeals and updates
- Emergency Plan of Action (EPoA)

Mr. Kaitano Chungu, Secretary General, email: [kaitano.chungu@redcross.org.zm](mailto:kaitano.chungu@redcross.org.zm)

Mulambwa Mwanang'ono - Disaster Management Manager; email: [mulambwa@gmail.com](mailto:mulambwa@gmail.com); (Mobile: +260 970 455 600)

**IFRC Country Cluster Office, Pretoria:**

Michael Charles, Head of Cluster, IFRC Southern Africa Multi-Country Cluster Support Office for Southern Africa; phone: +27113039715; email: [michael.charles@ifrc.org](mailto:michael.charles@ifrc.org)

**IFRC office for Africa Region:**

Adesh Tripathee, Head of Disaster Crisis Prevention, Response and Recovery Department, Nairobi, Kenya; phone +254731067489; email: [Adesh.tripathee@ifrc.org](mailto:Adesh.tripathee@ifrc.org)

**In IFRC Geneva**

Nicolas Boyrie, Senior Officer - Operations Coordinator (Africa); + 41 22 730 49 80 email: [Nicolas.boyrie@ifrc.org](mailto:Nicolas.boyrie@ifrc.org)

**For IFRC Resource Mobilization and Pledges support:**

Franciscah Cherotich – Lilech, Senior Partnership and Resource Development Officer, email: [Franciscah.cherotich@ifrc.org](mailto:Franciscah.cherotich@ifrc.org); phone: +254 202 835 155

**For In-Kind donations and Mobilization table support:**

IFRC Africa Regional Office for Logistics Unit: RISHI Ramrakha, Head of Africa Regional Logistics Unit, email: [rishi.ramrakha@ifrc.org](mailto:rishi.ramrakha@ifrc.org) phone: +254 733 888 022

**For Performance and Accountability support (planning, monitoring, evaluation and reporting enquiries)**

IFRC Africa Regional Office: Illah Ouma, acting PMER Coordinator; email: [illah.ouma@ifrc.org](mailto:illah.ouma@ifrc.org); phone: +254 780 771 139

## How we work

All IFRC assistance seeks to adhere to the **Code of Conduct** for the International Red Cross and Red Crescent Movement and Non-Governmental Organizations (NGO's) in Disaster Relief and the **Humanitarian Charter and Minimum Standards in Humanitarian Response (Sphere)** in delivering assistance to the most vulnerable. The IFRC's vision is to inspire, encourage, facilitate and promote at all times all forms of humanitarian activities by National Societies, with a view to preventing and alleviating human suffering, and thereby contributing to the maintenance and promotion of human dignity and peace in the world.

The IFRC's work is guided by Strategy 2020 which puts forward three strategic aims:



**Save lives,**  
protect livelihoods,  
and strengthen recovery  
from disaster and crises.



Enable **healthy**  
and **safe** living.



Promote **social inclusion**  
and a culture of  
**non-violence** and **peace**.